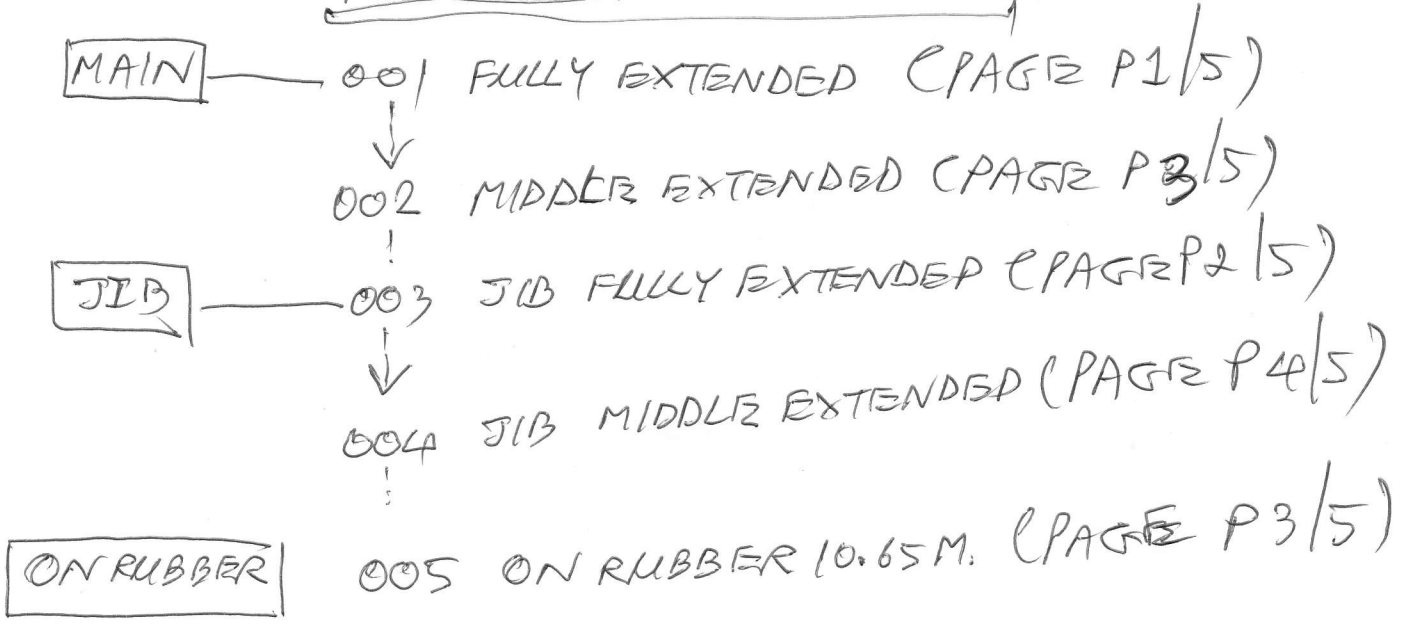
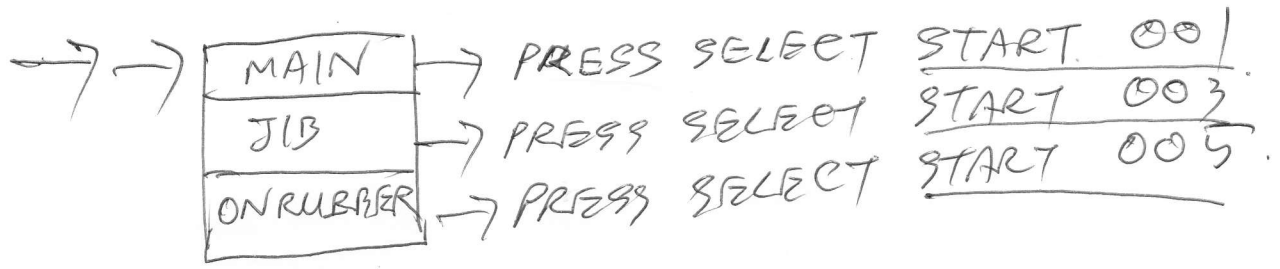


PROGRAM SELECTION



TG4050M3 BOOM LENGTH 10.65-40M



TOTAL RATED LOADS

(1) Standard specifications

(i)

[BOOM]

Unit : ton

· Outriggers fully extended + Front jack (360°) · Outriggers fully extended (Over rear · Over sides)					
A \ B (m)	10.65 m	18.0 m	25.3 m	32.7 m	40.0 m
3.0	45.00	28.00			
3.5	40.50	28.00			
4.0	36.50	28.00	20.00		
4.5	33.00	28.00	20.00		
5.0	30.20	28.00	20.00		
5.5	27.50	25.60	20.00	13.00	
6.0	25.00	23.50	20.00	13.00	
6.5	22.70	21.80	18.10	13.00	7.50
7.0	20.70	20.00	16.80	13.00	7.50
7.5	18.90	18.50	15.70	13.00	7.50
8.0	17.40	17.00	14.80	12.30	7.50
8.5	15.40	15.30	14.00	11.60	7.50
9.0	13.85	13.65	13.20	11.00	7.50
10.0	3.0T	10.95	10.85	10.00	7.50
11.0	3.0T	9.00	8.85	9.10	6.95
12.0	3.0T	7.50	7.35	8.20	6.45
13.0		6.30	6.15	6.95	6.00
14.0		5.35	5.20	6.00	5.60
16.0		3.85	3.70	4.50	4.80
18.0			2.50	3.40	3.95
20.0			1.60	2.45	3.10
22.0			0.85	1.75	2.35
24.0				1.15	1.75
26.0				0.65	1.25
28.0					0.85
30.0					0.50

A = Boom length

B = Working radius

MAIN : 001 / FULLY EXTENDE

P1/5

(1) Standard specifications
 (ii)
 [JIB]

Unit : ton

· Outriggers fully extended + Front jack (360°) · Outriggers fully extended (Over rear · Over sides)						
C D E (°)	9.0 m			16.0 m		
	5°	25°	45°	5°	25°	45°
80	3.50	2.20	1.20	2.30	1.10	0.60
79	3.50	2.20	1.20	2.30	1.10	0.60
78	3.50	2.20	1.20	2.30	1.10	0.60
77	3.32	2.14	1.19	2.18	1.07	0.59
76	3.13	2.08	1.18	2.06	1.05	0.59
75	2.97	2.02	1.17	1.96	1.02	0.58
73	2.68	1.91	1.15	1.78	0.97	0.57
70	2.33	1.74	1.11	1.56	0.91	0.56
68	2.15	1.64	1.09	1.44	0.87	0.54
65	1.91	1.49	1.07	1.27	0.81	0.53
63	1.78	1.39	1.03	1.18	0.78	0.51
60	1.45	1.25	1.00	1.06	0.74	0.50
58	1.16	1.03	0.98	0.93	0.68	0.49
55	0.82	0.69	0.66	0.63	0.47	
53	0.62					

C = Jib length
 D = Jib offset
 E = Boom angle

JIB : 003 / JIB FULLY EXTENDED

P2/5

(1) Standard specifications
(iii)
[BOOM]

Unit : ton

<ul style="list-style-type: none"> Outriggers middle extended (360°) Outriggers fully extended (Over front) 						Without outriggers (Over rear)	
A \ B (m)	10.65 m	18.0 m	25.3 m	32.7 m	40.0 m	A \ B (m)	10.65 m
3.0	40.00	28.00				3.0	8.00
3.5	34.00	28.00				3.5	6.40
4.0	28.60	28.00	20.00			4.0	5.10
4.5	26.20	26.05	20.00			4.5	4.20
5.0	19.60	19.50	19.40			5.0	3.40
5.5	15.40	15.25	15.20	13.00		5.5	2.80
6.0	12.60	12.30	12.25	13.00		6.0	2.30
6.5	10.40	10.15	10.10	11.30	7.50	6.5	1.90
7.0	8.70	8.50	8.45	9.60	7.50	7.0	1.60
7.5	7.40	7.20	7.20	8.20	7.50	7.5	1.25
8.0	6.30	6.25	6.15	7.10	7.50	8.0	1.00
8.5	5.40	5.40	5.30	6.15	6.90	A = Boom length B = Working radius	
9.0	4.65	4.65	4.55	5.40	6.10		
10.0	3.0T	3.50	3.35	4.15	4.85	ON RUBBER : 005 / ON RUBBER	
11.0	3.0T	2.50	2.45	3.30	3.85		
12.0	3.0T	1.65	1.65	2.65	3.15		
13.0				1.95	2.50		
14.0				1.40	1.95		
16.0					1.15		

MAIN : 002 / MIDDLE EXTENDED

P 3/5

(1) Standard specifications

(iv)
[JIB]

Unit : ton

• Outriggers middle extended (360°) • Outriggers fully extended (Over front)							
E (°)	C	9.0 m			16.0 m		
	D	5°	25°	45°	5°	25°	45°
80		3.50	2.20	1.20	2.30	1.10	0.60
79		3.50	2.20	1.20	2.30	1.10	0.60
78		3.50	2.20	1.20	2.30	1.10	0.60
77		3.10	2.14	1.19	2.18	1.07	0.59
76		2.65	2.08	1.18	2.06	1.05	0.59
75		2.25	1.85	1.17	1.70	1.02	
73		1.55	1.30				

C = Jib length D = Jib offset E = Boom angle

JIB 2004 / JIB MIDDLE EXTENDED

NOTES:

- The total rated loads shown are for the case when the outriggers are set horizontally on firm ground. The values are based on the crane strength.
- The weights of slings and hooks (400kg for a 45 ton capacity hook, 200kg for a 12 ton capacity hook and 100kg for a 4 ton capacity hook) are included in the total rated loads shown.
- The total rated load is based on the actual working radius including the deflection of the boom.
- The chart below shows the standard number of part lines for each boom length. The load per line should not exceed 4.0t for both the main winch and the auxiliary winch.

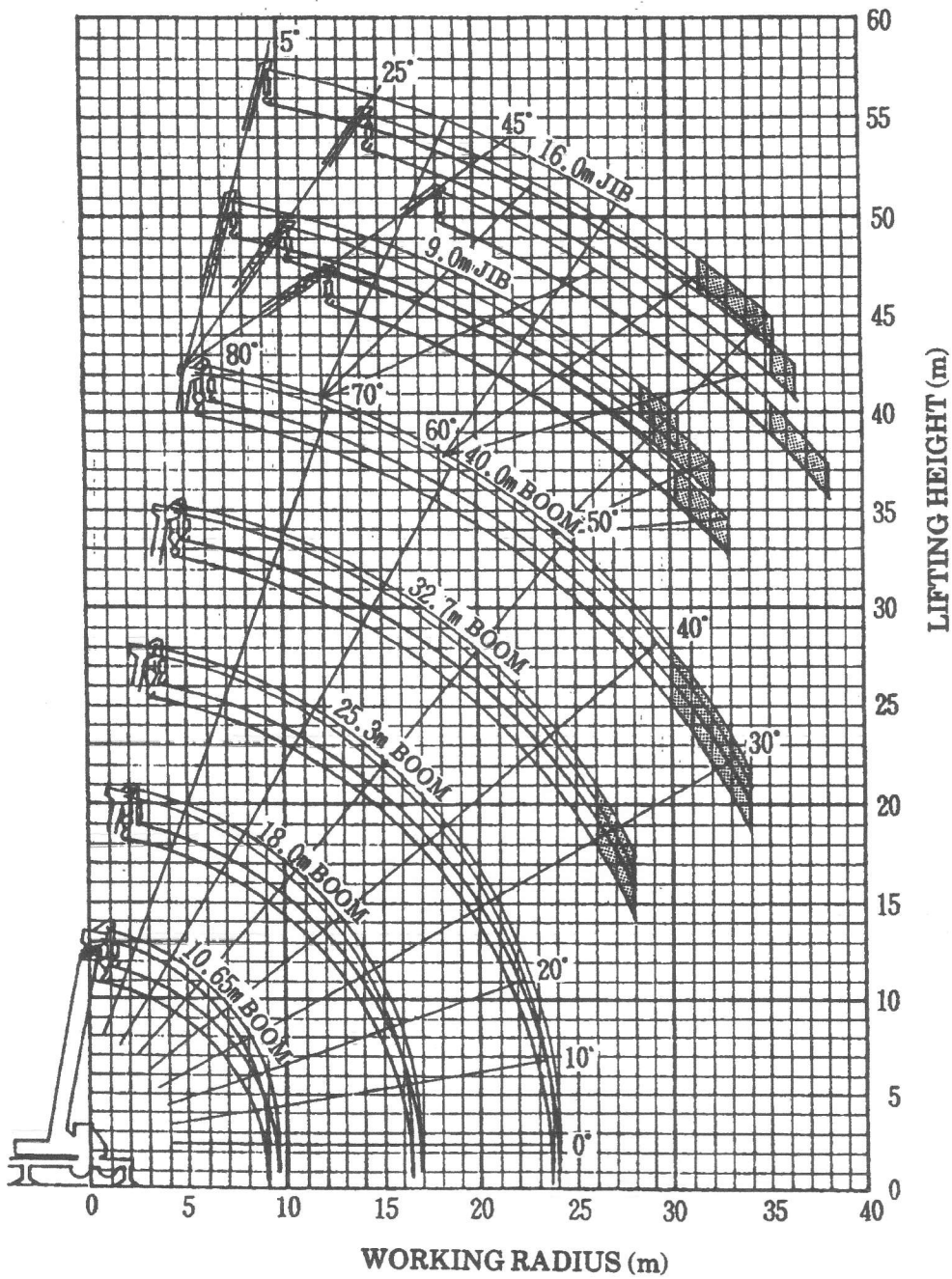
P 4/5

A	10.65m	18.0 m	25.3 m	32.7 m	40.0 m	J
H	11	7	5	4	2	1

A = Boom length H = No. of part-line J = Jib / Single top

- As a rule, free-fall operations should be performed only when lowering the hook alone. If a hoisted load must be lowered by free-fall operation, the load must be kept below 1/5th of the total rated load (the load per line must be 0.8t or less for both the main and the auxiliary winches) and sudden braking operations must be avoided. Free-fall operations should not be performed without the outriggers.
- The total rated load for the single top is the same as that of the boom and must not exceed 4.0 tons. However, when hooks, slings, etc. are mounted on the boom, one should work with the total rated load obtained by subtracting the weights of the hooks, slings, etc. mounted on the boom from the total rated load of the boom.

WORKING RADIUS - LIFTING HEIGHT



P 5/5

NOTES:

1. The deflection of the boom is not incorporated in the figure above.
2. The above chart is for the case where the outriggers are fully extended and where the front jack are used (over 360°)
3. The shaded area in the diagram applies only to the case when the device for heavy-duty work (option) is mounted.